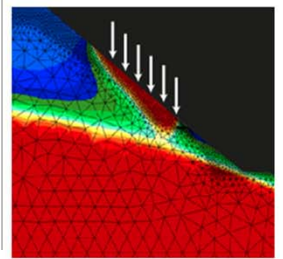
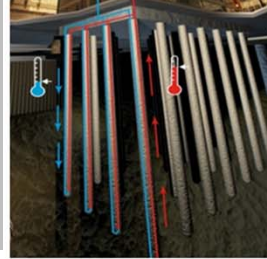
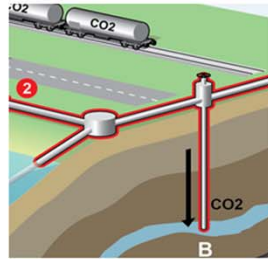


4 PhD Positions in Geomechanics at the EPFL, Lausanne, Switzerland



THE LABORATORY OF SOIL MECHANICS AT THE EPFL

The Laboratory of Soil Mechanics (LMS) is one of the laboratories within the School of Architecture, Civil and Environmental Engineering (ENAC) of the Swiss Federal Institute of Technology, Lausanne (EPFL). The LMS focuses its research activities on the protection from geo-hazards and industrial damage to the environment, landforms and structures. Our experimental and modelling resources are mobilised to understand, describe and predict the environmental impact of the technologies of future days, such as nuclear and chemical waste disposal, petroleum and gas exploitation, transportation and storage, methane hydrate technology, CO₂ geological sequestration, and energy technologies related to heat storage. The LMS is directed by Prof. Lyesse Laloui; it has 5 academic staff members, 3 Post-docs, 10 PhD students and 10 employees. More information about the LMS and its current research can be found at <http://lms.epfl.ch/en>.

AVAILABLE POSITIONS

The LMS is looking for 4 PhD students on the following topics:

Gas shales: the candidate will work on an integrated experimental and theoretical approach to solve issues related to geomechanical behaviours of gas shales.

Geomechanical modeling for landslide risk analysis: the PhD student will work on the use of advanced geomechanical modeling to provide spatial and temporal maps of risk of failure and the integration of the results in early-warning-systems.

CO₂ sequestration: the PhD fellow will work on experimental geomechanics related to the storage of CO₂.

Numerical development for environmental geomechanics : the candidate will work on constitutive models developing, scientific programming and simulations with particular focus on topics related to environmental geomechanics.

REQUIREMENTS

A recent Ms degree in Civil Engineering or a related field is required. Suitable candidates have scientific research skill, outstanding communication skills and a teamwork attitude. First candidate selection will be performed on the basis of the excellence of the CV. Selected candidates will be then invited for an interview at the EPFL.

CONDITIONS OF EMPLOYMENT

We are offering excellent facilities and competitive salary (55'000 CHF/year). The EPFL offers an outstanding international working environment along with training and development opportunities. Personal initiative and independent research tasks related with the candidate's interests will be encouraged. Other activities will include interaction with Ms students and participation in teaching.

APPLICATIONS

The positions are open and will start upon agreement. Please contact Dr. Alessio Ferrari (alessio.ferrari@epfl.ch) for more information. Suitable, highly-motivated candidates should send an electronic application (including a cover letter describing interests and qualifications and a CV, as a single PDF) to recruitment.lms@epfl.ch.



ÉCOLE POLYTECHNIQUE
FÉDÉRALE DE LAUSANNE

JUNE 2012